

WELLAND PUBLIC LIBRARY BOARDWALK BANTER

Bibliothèque Publique
Welland
Public Library
www.wellandlibrary.ca
t. 905-734-6210



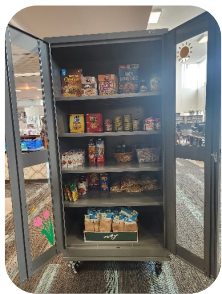
Fall Issue 2023

Little Free Pantry Food Drive and Canadian Library Month

On October 5, we officially launched our first ever Little Free Pantry at the Main Branch. This initiative aims to provide barrier-free access to non-perishable food and personal care items to anyone who needs it. The pantry will primarily operate on a 'take what you need, give what you can' model and will be available during Main Branch opening hours.



Donations to our pantry can be made all year long at any of our branches, but throughout the month of October (in celebration of Canadian Library Month) we will be running a Food for Friends food drive to help stock the pantry. Public Libraries remain an essential component to the fabric of all communities, providing free programming, resources, and refuge to many. If you haven't visited lately, you might be surprised to find that we also lend a wide variety of items including a sewing machine, sports equipment, musical instruments, WiFi hotspots, toys, games, puzzles, and more!



Let's work together to help reduce food insecurity in our community.

We thank you in advance for your generosity. For more information about donating to the pantry, please contact us at (905) 734-6210 or email info@wellandlibrary.ca.

Niagara Region Public Health Pop-Up Markets at WPL

WPL has partnered with Niagara Region Public Health to offer Pop-Up Produce Markets this fall. There are no set prices at this market; attendees are asked to pay what they can. Markets will be held from 1pm -3pm at the Main Branch on Monday, October 30; Monday, November 27; and Monday, December 18.

Winter Warmth Donations

Starting November 1, we will begin accepting donations for our Winter Warmth table. New and very gently-used coats, hats, scarves, mitts/gloves, and other winter wear will be accepted. Heavy socks (new only) are also a much-needed item. Donations accepted at the Main Branch only.



What's Growing at WPL?

We're thrilled to reveal our library's newest addition, a magnificent tree that has been quietly growing in the heart of our space. We invite little explorers and their families to embark on an adventure at our Main Branch. We hope to see you by the tree soon!



New: Toy Lending Library

You can now borrow a wide variety of toys at WPL! Our curated collection of STEAM and literacy support toys will soon expand to include items that encourage physical activity and socio-emotional well-being.



The Matatalab Pro Set is just one of the super-fun items that can be borrowed today. It is a screen-free and hands-on toy that teaches children the basic concepts of coding while having a blast.

Other featured collection items include a Junior Metal Detector and Junior Microscope to encourage exploration and discovery, and the Rigamajig Jr., Squigz and Magformers to encourage creativity and imagination. Caretakers can borrow toys for a one-week duration.

Sunday Hours Return

Starting October 15, our Main Branch Sunday hours return until April 28, 2024. We can't wait to welcome you between 1pm and 5 pm on Sundays and make your weekends even better. See you soon!

Borrow an iPad at WPL

WPL now has iPads available to borrow! iPads can be borrowed from any of our branches for a one-week loan period using your free library card.

LIBRARY CLOSURES

Sunday, December 24

Monday, December 25

Tuesday, December 26

Sunday, December 31

Monday, January 1

Love Your Library Patron Story: Origami by Stanley Lee



If you've visited the children's area at the Main Branch even once this year, you've probably seen the origami created by our valued patron, Stanley Lee, which he generously leaves for people to take free-of-charge. Stan likes coming to the library to borrow DVDs and books, and also enjoys visiting the friendly staff and peaceful environment.

Origami is the Japanese art of folding paper to create objects like animals, shapes, and characters. Paper may be folded eight or more times on the same crease to achieve the desired effect!

Stan, a Scouts leader, began making origami when he was a young boy in Grade 1 or 2 in China. He originally learned from his mother; first making a ball to fill with water to launch at his friends - much like a water balloon - and next, the head of the lion from the Chinese lion dance. By Grade 4, his first year in English school, Stan began learning from a book and creating birds with moving wings.



The most complex origami that Stan has made is the three-headed dragon from Greek mythology - it took him eight hours - and his favourite animal to make is the rabbit. Stan is still learning to make new origami today.

In addition to traditional origami, Stan also makes 3D origami (shown here), and paper craft objects. It takes him about 23 seconds to fold each piece of paper for 3D origami.

Thank you Stan for your contributions!

WPL is a Purse Project Niagara Community Ambassador



We're partnering again this fall with the Purse Project Network Niagara. This incredible organization collects purses filled with full-size personal care items for women. Their goal is to fill a woman's heart with hope by providing her with personal care needs and a note of warmth and encouragement. Last year, nearly 400 purses were collected and distributed to women in Niagara.

New and very gently-used purses (no scuffs, tears, pen marks, etc.) containing the ten essential (full-size) items can be dropped off at any WPL branch from November 1-30. Optional items can be added and adapted as you see fit. A full list of items will be available on our website, starting Nov 1. Purses will be distributed during the first two weeks of December.

For inquiries about participation in this project, please contact us at 905-734-6210, ext 2521.

Welland City Women's Institute

This October - Women's History Month - we're remembering the Welland City Women's Institute and their many accomplishments.

The first Women's Institute was formed in 1897 in Stoney Creek and later became a worldwide organization. The Welland branch was founded in 1901 and their members were instrumental in purchasing the first ambulance for the Welland County General Hospital. They later disbanded during World War I so they could take up Red Cross work.

The Institute re-organized in 1923 and played a large role in the Welland community for many decades to come, raising money for charities and spearheading many forward-thinking initiatives.

The photograph shown here was taken 50 years ago and depicts Women's Institute president, Mrs. H. Everett, presenting a book to the Welland Public Library's Chief Librarian, Miss Shirley L. Jones, in commemoration of their 50 anniversary.



Welland Public Library Photo Collection, September 1973

Main Branch

50 The Boardwalk Welland, ON L3B 6J1
905-734-6210 ext. 2521

Diamond Trail Branch

315 Southworth Street Welland, ON L3B 1Z8
905-734-6210 ext. 2501

Seaway Mall Branch

800 Niagara St. Welland, ON L3C 5Z4
905-734-6210 ext. 2518